

**Watershed School
Reopening Plan for 2020-2021 Academic Year**

June 18, 2020

**Watershed School
Reopening Plan for 2020-2021 Academic Year**

Table of Contents

- I. Introduction**
- II. Returning To Campus with Live Classes**
- III. Monitoring the Health and Safety of our Community**
- IV. Implementing Flexible Scenarios to Minimize Exposure**
- V. Shifting to Remote Teaching and Learning (if required)**
- VI. Appendix**
 - 1. CDC Decision-Making chart**
 - 2. Parent Disclaimer Form**

Part I. Introduction

Our Working Assumptions and Plans for Reopening outlined in this report are based on the information provided at this time by the Center for Disease Control, the Maine Department of Education, the Maine Association of Independent Schools, and the New England Association of Schools and Colleges.

Based on the information gathered from these science-based resources, along with input from the Watershed School Faculty, Administration, and Board of Trustees, we have put together a plan to reopen school in the fall with live, in-person classes. This reopening scenario is built on the premise that all returning members of the Watershed Community recognize the importance of putting the health and safety of our community as the top priority. While we cannot guarantee zero transmission of the COVID 19 virus, we have developed plans that will serve to reduce, as much as possible, the risk of exposure or transmission of the virus.

Any plan, of course, requires the commitment of all in the community to uphold the specific protocols and safety requirements in order for it to be effective. Please read over the plan together with your student and make sure you understand all of its components.

As circumstances change over the course of the summer, this plan will be updated and adapted to make sure we are doing the best we can to ensure a safe and healthy start to the school year.

I look forward to strengthening our sense of community and engaging once again in the joy of teaching and learning together. Should you have any questions, please don't hesitate to contact me.

Thank You!

Sincerely,

William M. Galloway
Head of School

Part II. Returning To Campus with Live Classes

1. Prior to the Start of School

Watershed families will need to make sure that all health and medical forms are updated prior to the start of school. In addition, families need to review the safety protocols listed below and sign their commitment letter (see appendix) to uphold these protocols to the best of their ability as a prerequisite to returning to campus in the fall.

- √ Complete and update all medical forms and questionnaire
- √ Be prepared to provide recent travel and contact tracing information
- √ Sign the affidavit affirming that no signs or symptoms of COVID19 are present in your household.
- √ Review the Health and Safety Protocols listed below together as family, and sign your commitment to uphold these protocols while on campus-

- Wear PPE masks while on campus and in class at all times
- Commit to physical distancing of 6 ft in classrooms and common areas
- Adhere to the signs designating movement throughout the building
- Practice frequent and thorough hand-washing
- Be willing to participate in temperature screening
- Use hand sanitizer upon entry into each classroom.

While specific decisions and plans will be finalized over the next several months as more information and updated health guidelines are issued, additional teaching and learning practices are being developed to help ensure the health and safety of all community members, which may include but are not limited to-

- Staggered starts and lunches
- Learning cohorts of 3-5 students
- Shortened school days
- Outdoor programming and classes

2. Arriving On Campus

√ Drop off and Pick up will be between 8:30-9:00. Please avoid clustering in the parking lot.

- √ Enter and Exit the Building according to the signs posted throughout the building.
- √ Note and adhere to all other signs of traffic flow up and down stairways

3. Student Orientation- Creating a Culture of Health, Safety, and Care

√ Getting the Facts- To ensure that we are all informed of the most recent guidelines and updates regarding COVID 19, students and faculty will be provided a presentation from a local medical expert on the risks and safety protocols, followed by a question and answer period to ensure that we have the information we need to make healthy decisions.

√ Making A Commitment to Healthy Practices- Gaining commitment from all members of the school community who work, live, and learn in our shared space is essential. Engaging students, faculty, administration, board, and parents in this process is important so that we all participate fully in the effort to reduce risk and promote healthy interactions on campus.

4. Classes

Watershed is fortunate to have a building large enough and a school population small enough to ensure a 6-foot physical distancing in its classroom spaces. Where this is not possible, students may be organized into smaller cohorts and alternate in-person classroom experiences with either small group work in another location or group conferencing using remote platforms. In addition, our outdoor space behind the building will be utilized more frequently as a classroom space to provide additional physical distancing and airflow. All students and faculty will clean hands upon entering with hand-sanitizer, along with more frequent cleaning and disinfecting of the building.

5. Bathrooms

Hand sanitizer and sanitation wipes will be available in all bathrooms. Students and faculty will be reminded to wash hands thoroughly and frequently. All bathrooms will be professionally cleaned in accordance with the State's general guidelines for schools and new exhaust fans installed to ensure adequate airflow.

Part III. Monitoring the Health and Safety of our Community

- Watershed is developing specific plans for monitoring the health and safety of our learning community in consultation with local, medical experts, the National Association of Independent Schools, the Maine Department of Education, and the CDC.
- Parents play an important role in maintaining a healthy school community by communicating early and directly with the school should any person in their household experience COVID-like symptoms.
- All faculty and staff have been explicitly instructed not to come to work if they experience COVID-like symptoms.
- In addition, we ask that all students, faculty, and staff avoid unnecessary travel domestically or internationally. If members of our community travel to hot spots or expose themselves to large crowds, we ask that they strongly consider a 14 day self-quarantine upon return to the area.
- We must rely on commitments from all members of our community to practice healthy hygiene, use PPE masks, maintain physical distancing, and follow protocols established by the school in order for us to reopen successfully and maintain a healthy learning environment.
- Watershed School will uphold specific health precautions in accordance with our local, state, and federal requirements. Public health guidelines will be forthcoming with regard to COVID 19 testing.

Part IV. Implementing Flexible Scenarios to Minimize Exposure

One of Watershed School's great strengths is its flexibility. Our small, agile, and creative learning community is well positioned to develop meaningful learning experiences even as circumstances change. Implementing flexible teaching and learning scenarios might occur if there is a significant spike in the number of positive cases in Maine, if the CDC or the Department of Education recommended a hybrid teaching and learning model, or if there was some evidence of COVID-like symptoms in the community.

The following elements would be considered as part of a hybrid teaching and learning program:

√ Tutorial System implemented to complement online classes with 1:1 or small group tutorials at school, online, or outdoors.

√ Data Collection and feedback loops put in place to encourage and monitor community interactions and attitudes regarding safety protocols.

√ Utilize Contact Tracing techniques consistent with applicable health guidelines concerning containment for students or employees who experience covid-like symptoms, test positive for covid virus, or have had contact with someone who has.

√ Provide flexible scheduling to include small cohorts of students, allow for 14-day quarantine periods as necessary, or reduce the frequency and duration of contact with other students or faculty.

√ Adjust remote teaching and learning platforms based on feedback from students, teachers, and families to ensure that the teaching and learning experience is engaging, meaningful, sustainable, and emphasizes small group projects, hands-on experiences, and one-to-one meetings with teachers.

√ Implement attendance requirements to promote healthy and regular class participation, dialogue with peers, and positive growth over time.

PART V: State Mandated Shift to Online Classes

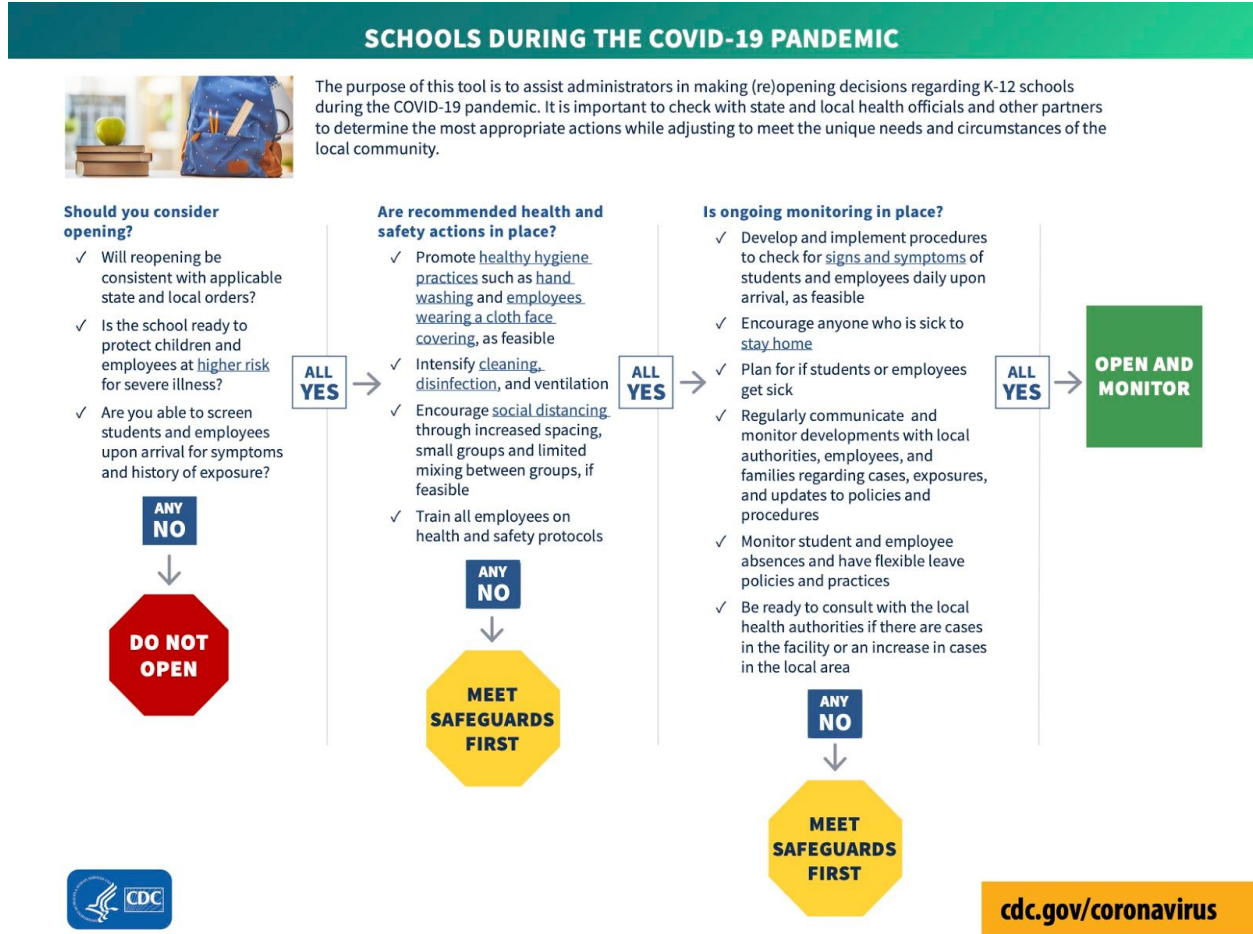
In such a scenario where the State Department of Education mandates the closure of all schools to live teaching and learning on campus, Watershed School would transition to a modified online academic program.

From our experience this spring, feedback from parents, faculty, and student surveys, Watershed will enhance and revise the remote teaching and learning experience with greater emphasis on educational modalities that emphasize hands-on activity, outdoor experiences, and closer collaborations with a cohort of other students. Additionally, remote classes would take place on only two, specifically-designated days of the week.

We look forward to welcoming families back to campus this fall and will stay in close contact with you over the summer months as we learn more from the National Association of Independent Schools, the Department of Education and the CDC.

Take good care and please don't hesitate to contact me with any questions. Thank Y
APPENDIX #1

Decision-making will be guided by the following chart from the Maine Center for Disease Control:



APPENDIX #2

Confirmation Letter: Voluntary Return to Watershed School

Watershed School understands that it is the parents' voluntary decision to permit their child to resume on-site classes at One Free St, Camden and surrounding town locations such as Harbor Park, Town Landing, CPL. The school will implement management and control measures in accordance with relevant regulations to mitigate the risk of the spread of COVID-19. **Do keep in mind however, that managing risks doesn't mean there will be no transmission. There's no such thing as zero risk**, but we can take measures that will mitigate the chances of the spread in our school building and surrounding town locations. However, parents are also responsible for taking measures to mitigate the risk that their child(ren) may present a risk to their own health or the health of others when at school.

1. I, _____ (parent full name), hereby certify that my child _____ (child's full name), has permission to return to Watershed School campus and participate in all learning activities as determined and permitted by the school.
2. I agree to monitor my child's health each day and keep my child home if he/she has a fever at or above 100.4 degrees, cough, fatigue, and/or other physical symptoms that require observation, health isolation, or medical treatment.
3. I understand that the school will take my child's temperature before entering the school building. If my child has a fever of 100.4 or above, he or she will be isolated, parent/legal guardian will be contacted and the child must be picked up by a parent or legal guardian within one hour.
4. If my child is sent home he or she cannot return to school for 72 hours from the day he or she is sent home, and upon return, must be symptom-free and fever-free without medication.
5. I understand that I must have a physician's release in order for my child to return to class after any such illness.
6. I agree to accept the management and control measures taken by the school in accordance with relevant regulations to reduce the spread of COVID-19.
7. I understand that these are risk-management measures and that the school cannot guarantee safety for all students or prevent them from contracting any illness.
8. It is understood that parents / visitors may only enter the building with masks and physical distancing requirements adhered to. We request parents / visitors call ahead of time whenever

possible, and unnecessary visits be avoided. All parents / visitors will be subject to the same temperature check and hand sanitation protocol as stated above.

9. We certify that we have not been on a plane for the past 14 days, and no one in the residence has tested positive for COVID-19.

10. I understand that as long as the school is permitted to remain open, my family's tuition obligation remains unconditional whether or not my child is able to attend due to my child's health.

By voluntarily enrolling my child(ren) in Watershed School, I acknowledge and agree that I am assuming the risk of my child(ren) or myself possibly contracting COVID-19. Further, I acknowledge and agree that on my behalf and on behalf of my child(ren) I am voluntarily waiving any claim of liability against the School should my child(ren) or I contract COVID-19 as a result of participating in Watershed School. Further, I expressly agree to hold the School harmless should I and/or my child(ren) contract COVID-19 as a result of our voluntary participation in Watershed School. I further acknowledge and agree that should it be necessary to close Watershed School due to orders from the federal, state or local government, I will not receive a refund of fees paid for participation in Watershed School.

Parent Signature: _____

Date: ____/____/____